

# Australia's International 3 Day Event

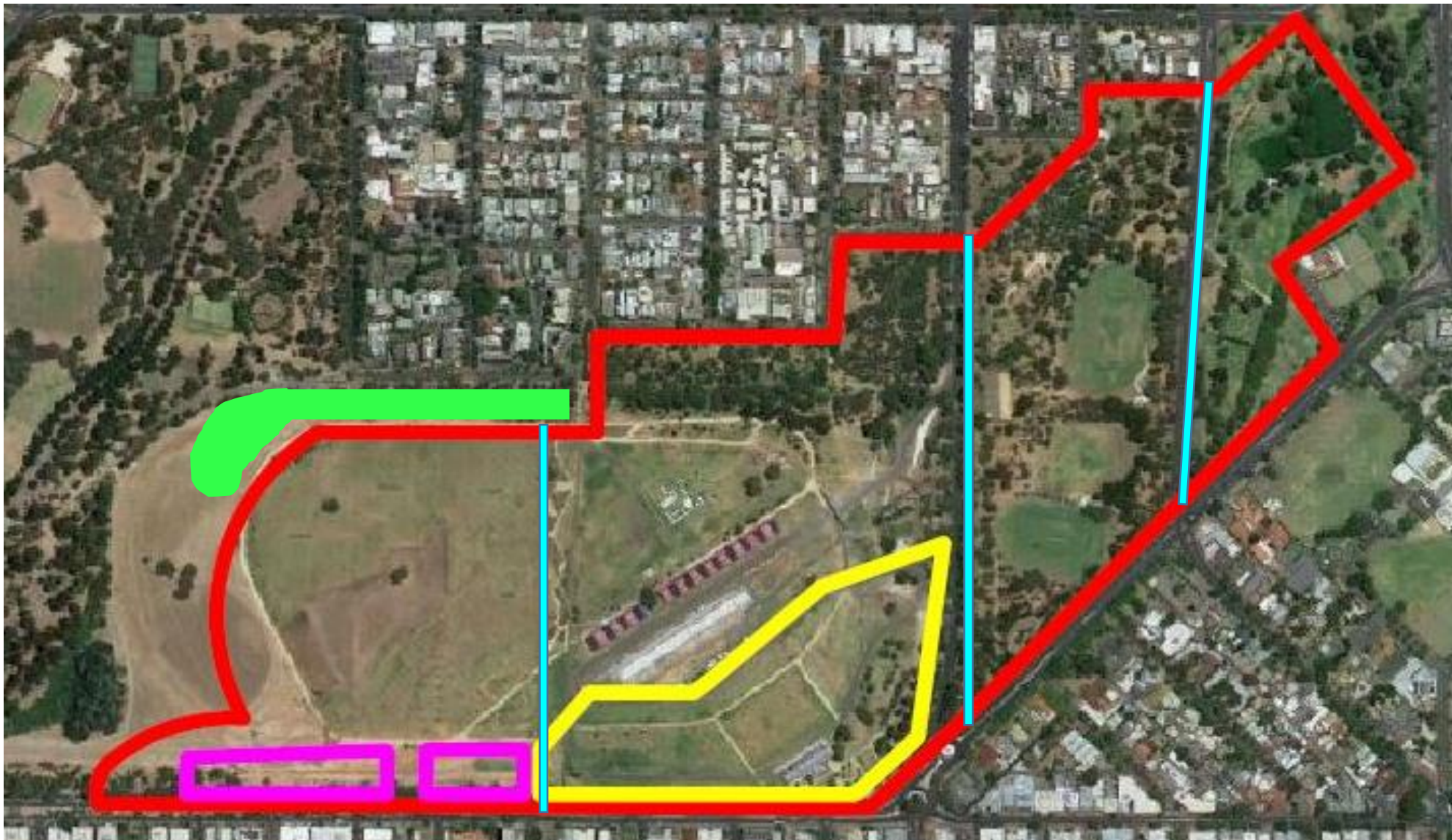
16 - 19 November 2017



Victoria Park / Pakapakanthi, King Rodney Park / Ityamai-itpina & Rymill Park / Murlawirrapurka

**PLEASE NOTE ALL BLUE PATHWAYS WILL BE CLOSED FOR THE CHRISTMAS PAGAENT**

Bump in from: Wednesday 8<sup>th</sup> November 8am | Bump out by: Tuesday 21<sup>st</sup> November 8pm



## RED ZONE



NO PUBLIC ACCESS & TEMPORARY PATH CLOSURE from 12.00am, Saturday 18 November. Path RE-OPENS at 11.00pm, Saturday 18 November.

## YELLOW ZONE



NO PUBLIC ACCESS & TEMPORARY PATH CLOSURE from 8.00pm, Thursday 16 November. Path RE-OPENS at 9.00am, Monday 20 November. Café Velo & Vic Park Kiosk will be open to public until Thursday 16 Nov and again on Monday 20 November

## PINK ZONE



This is the Horse Stables Location and NO PUBLIC ACCESS in this area from 8.00am, Monday 13 November to 9.00am, Monday 20 November.

## BLUE ZONE



Victoria Park Central Pathway, Wakefield Street & Bartels Road **CLOSED FOR THE CHRISTMAS PAGAENT** from 12:00am Saturday 18 November. REOPENS at 11:00pm Saturday 18 November.

**GREEN ZONE** - Car parking will be available and monitored by U PARK on Saturday 18<sup>th</sup> November from 8am-8pm, accessed via Halifax Street entrance into Victoria Park/Pakapakanthi.

We appreciate your understanding and apologise for any inconvenience caused.  
For further information about the AI3DE please visit: [www.australian3de.com.au](http://www.australian3de.com.au)